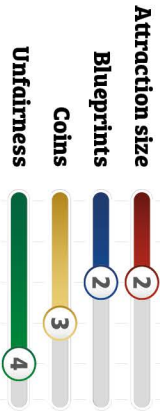


Vampire

Supporting strategies of:



Main Gate

Park Entrance



Guest Capacity

Park limits:

- Guest capacity: 15
- Super attractions: 1
- Total attractions: 5

Super attractions require 5 stars.



BIG AL'S TOTALLY LEGIT FINANCIAL SERVICES

PURPOSE: Loan

Take one or more loans at any time. It's easy!



Repay in points only.
Due at end of game.
No early repayment.

NO EXCUSES
NO EXTENSIONS
NO EXCEPTIONS

This round, each player is affected by

A Film Festival



Guests step:

Each park with at least one open theatre scores 5 extra stars.

Art films, foreign films, black and white films.
Just so long as they keep buying popcorn.



This round, each player is affected by

Night-time Opening



Guests step:

Total your income from all sources as normal and gain twice that amount instead. Then for each staff member in your park, pay 3 coins or dismiss them.

"Overtime?! Just because they're working in a dimly lit deathtrap on their personal time?"



This round, each player is affected by

Public Curiosity



Guests step:

Each park with at least one open sideshow scores 5 extra stars.

The value of the bizarre and the grotesque is to make the public happy about being ordinary.



This round, each player is affected by

A Blood Drive



Choose a **staff member** in your park and make them unavailable.

Donating their own blood, how... sweet.

This round, each player is affected by

Public Condemnation



Close all **sideshow**s.

"Sideshows — breeding grounds for gamblers and thieves! And those carnival folk..."



This round, each player is affected by

Stormy Weather



Guests step:

Calculate your park's star total as normal, including all other effects. Your park scores half that total, rounded down.

"I came out to ride the Thunderbolt and the Hurricane, but this is ridiculous!"



ARTHOUSE

COMPLETE ALL ITEMS

V001

Penalty if incomplete: 10 points

- Any **Theatre**, with:
 - + Any **Guest Services** upgrade
 - + Any **Feature** upgrade



FINE DINING

COMPLETE ALL ITEMS

V002

Penalty if incomplete: 10 points

- Any **Food Outlet**, with:
 - + At least 5 stars from **Quality** upgrades



OH, THE HORROR!

COMPLETE ALL ITEMS

V003

Penalty if incomplete: 10 points

- Outright largest attraction size for a **Theatre** in all parks



BONUS TARGET

Complete top section to qualify

Haunted House



= UNIQUE



WHEEL OF FATE

COMPLETE ALL ITEMS

V004

Penalty if incomplete: 10 points

- Ferris Wheel**, with:
 - + Any **Quality** upgrade
 - + **Vampire** theme icon



BONUS TARGET

Complete top section to qualify

Fortune Teller



= UNIQUE



MASS APPEAL

COMPLETE ALL ITEMS

V005

Penalty if incomplete: 10 points

- Star total of at least 25 stars



BONUS TARGET

Complete top section to qualify

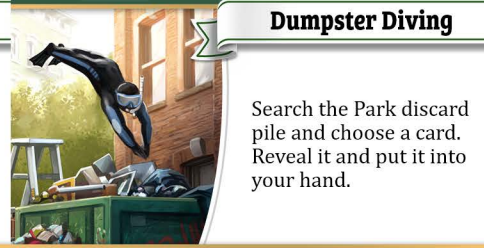
- At least five **Staff Members**



First in Line

Choose a card from the Market and put it into your hand.

All it took was three weeks of waiting in a queue.



Dumpster Diving

Search the Park discard pile and choose a card. Reveal it and put it into your hand.

Friends won't mention that you stink if you spend too much time in the trash. But you do.

Anonymous Complaint

Inspection. Choose a **type of ride attraction**, then choose a competitor and close all attractions of that type in their park.



"Won't anyone think of the children?"



Drunken Hooligans

Intrusion. Choose a **guest services** upgrade in any park and demolish it.



It's not a real party until they trash something.





Project Management

You may draw up to three Blueprint cards then choose one to keep.

You may discard a blueprint you own.

The only way to manage some projects is to finally manage to get rid of them.

PRINT-n-PLAY ~ PRINT-n-PLAY ~ OR ~ PRINT-n-PLAY ~ PRINT-n-PLAY PRINT-n-PLAY ~ PRINT-n-PLAY ~ OR ~ PRINT-n-PLAY ~ PRINT-n-PLAY PRINT-n-PLAY ~ PRINT-n-PLAY ~ OR ~ PRINT-n-PLAY ~ PRINT-n-PLAY



Merchandising

Gain 5 coins.

It's like printing money, if money were shaped like t-shirts, teddy bears, and coffee mugs.



Unusual Bequest

Build an **upgrade** from your hand immediately for free.

A huge fan of theme parks all his life, Kevin decided to spend his afterlife as part of one.



Media Blitz

Other **Media Blitz** events in play are discarded.

Guests step:
Your park scores 8 extra stars.

It's not brainwashing, exactly. More like a rinse.

Frivolous Lawsuit

Choose a **staff member** in any park. Dismiss them unless their employer spends 20 coins or discards a **Giant Wad of Cash**.



The complaint may be imaginary but the legal bills are very real.

Giant Wad of Cash

Choose an **attraction** in any park. You may close it or reopen it.



City officials are so hard-working, and shamefully underpaid.

Powerful Friends

You may discard this card from your hand to block an **Injunction** event from affecting you.



"Who did you kiss in the haunted house, Mr Mayor, when you thought nobody could see...?"

Review Board

Injunction.
Choose a **feature** upgrade in any park and demolish it.



"We've reviewed your attraction and it really is just too interesting to meet city regulations."

Efficiency

Park step:
You may take up to four actions in total.



You could get so much more done if you'd just stop eating and sleeping.

Sponsorship Deal

Guests step:
Gain 1 extra coin for each guest visiting your park.



"Printing ads on the back of the tickets? Pfft! We print the tickets on the back of the ads!"

Renovation

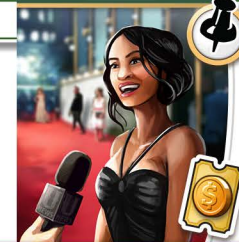
You may close an attraction in your park.
This round, when you pay to build an upgrade on a closed attraction in your park, you may pay half the marked coin price, rounded down.



Pardon our mess, we'll be ready to take your money again soon.

Celebrity Guest

Choose an attraction in your park and close all others in your park.
Guests step:
If the chosen attraction is open, gain 2 extra coins for each guest visiting your park.



She gets exclusive access to her favourite ride, and you get to overcharge her entourage.

Safety Certificate

You may discard this card from your hand to block an **Inspection** event from affecting you.



Be careful not to smudge it, the ink's still wet.

Security Guards

You may discard this card from your hand to block an **Intrusion** event from affecting you.



"Security Guards" has a much nicer ring to it than "Hired Thugs", don't you think?"

Vandalism

Intrusion.
Choose a **quality** or **theme** upgrade in any park and demolish it.



"Hey, they missed a spot! Nope, false alarm."


Head Hunting

Choose a **staff member** in any park and move them to your park.



People change jobs for many reasons: higher pay, better conditions, vampiric mind control...

Celebrity Guest



Choose an attraction in your park and close all others in your park.

Guests step:
If the chosen attraction is open, gain 2 extra coins for each guest visiting your park.

He gets exclusive access to his favourite ride, and you get to overcharge his entourage.

PRINT-n-PLAY ~ PRINT-n-PLAY ~ OR ~ PRINT-n-PLAY ~ PRINT-n-PLAY


Head Hunting



Choose a **staff member** in any park and move them to your park.

People change jobs for many reasons: higher pay, better conditions, vampiric mind control ...

Instant Karma



You may reveal this card when an event played by a competitor affects you.


Play this card immediately as a duplicate of that event.

You may use the duplicate as if any extra costs were paid up to the same cost as the original event.

You must try to affect the owner of the original event.

PRINT-n-PLAY ~ PRINT-n-PLAY ~ PRINT-n-PLAY ~ PRINT-n-PLAY ~ PRINT-n-PLAY ~ PRINT-n-PLAY ~ PRINT-n-PLAY ~ PRINT-n-PLAY ~ PRINT-n-PLAY ~ PRINT-n-PLAY

Instant Karma



You may reveal this card when an event played by a competitor affects you.

Play this card immediately as a duplicate of that event.

You may use the duplicate as if any extra costs were paid up to the same cost as the original event.

You must try to affect the owner of the original event.

PRINT-n-PLAY ~ PRINT-n-PLAY ~ PRINT-n-PLAY ~ PRINT-n-PLAY ~ PRINT-n-PLAY ~ PRINT-n-PLAY ~ PRINT-n-PLAY ~ PRINT-n-PLAY ~ PRINT-n-PLAY ~ PRINT-n-PLAY

Vlad's Impaler **3**

Super Attraction – Thrill Ride




PRINT-n-PLAY ~ PRINT-n-PLAY ~ PRINT-n-PLAY ~ PRINT-n-PLAY ~ PRINT-n-PLAY ~ PRINT-n-PLAY ~ PRINT-n-PLAY ~ PRINT-n-PLAY ~ PRINT-n-PLAY ~ PRINT-n-PLAY

Once per Events step:
You may search either the Park deck or the Park discard pile for a **staff member** card. Reveal it and put it into your hand. Shuffle the Park deck if you searched it.

"Keeping pets helps to pass the time."

People change jobs for many reasons: higher pay, better conditions, vampiric mind control ...

What goes around now takes just seconds to come around.

What goes around now takes just seconds to come around.

"Keeping pets helps to pass the time."

Renfield's Stakehouse **3**

Super Attraction – Food Outlet






PRINT-n-PLAY ~ PRINT-n-PLAY ~ PRINT-n-PLAY ~ PRINT-n-PLAY ~ PRINT-n-PLAY ~ PRINT-n-PLAY ~ PRINT-n-PLAY ~ PRINT-n-PLAY ~ PRINT-n-PLAY ~ PRINT-n-PLAY

Once per Guests step:
Gain 2 extra coins for each available **staff member** in all parks.

At Renfield's, the meal is always at some other poor creature's expense.

Inverted Rollercoaster **3**

Attraction – Thrill Ride

PRINT-n-PLAY ~ PRINT-n-PLAY ~ PRINT-n-PLAY ~ PRINT-n-PLAY ~ PRINT-n-PLAY ~ PRINT-n-PLAY ~ PRINT-n-PLAY ~ PRINT-n-PLAY ~ PRINT-n-PLAY ~ PRINT-n-PLAY

Ferris Wheel **3**

Attraction – Leisure Ride




PRINT-n-PLAY ~ PRINT-n-PLAY ~ PRINT-n-PLAY ~ PRINT-n-PLAY ~ PRINT-n-PLAY ~ PRINT-n-PLAY ~ PRINT-n-PLAY ~ PRINT-n-PLAY ~ PRINT-n-PLAY ~ PRINT-n-PLAY

Luxury Cinema **2**

Attraction – Theatre




PRINT-n-PLAY ~ PRINT-n-PLAY ~ PRINT-n-PLAY ~ PRINT-n-PLAY ~ PRINT-n-PLAY ~ PRINT-n-PLAY ~ PRINT-n-PLAY ~ PRINT-n-PLAY ~ PRINT-n-PLAY ~ PRINT-n-PLAY

At Renfield's, the meal is always at some other poor creature's expense.

What goes around now takes just seconds to come around.

What goes around now takes just seconds to come around.

"Keeping pets helps to pass the time."



Le Tapis Rouge

Attraction – Food Outlet



\$ 11



You may use an action to build a **Vampire Theme** on this attraction for free.



Haunted House

Attraction – Sideshow



\$ 13



Maze of Mirrors

Attraction – Sideshow



\$ 8



Fortune Teller

Staff Member



\$ 4



Once per Events step:
You may look at the top card of the City deck. Return it face-down.

Her predictions are astonishingly accurate.



Groundskeeper

Staff Member



\$ 8



Once per Events step: *Intrusion.*
You may choose an upgrade in any park, demolish it and put the card into your hand. If this event is blocked, dismiss this staff member instead.



Licensed Character

Staff Member



\$ 5



"My kids love that show. I'm just so glad they keep releasing new toys for it. So glad."



Mesmerist

Staff Member



\$ 7



Once per Events step:
You may choose a **staff member** in any park who has no mesmerism tokens. That staff member gains a mesmerism token and you may make them unavailable or available.



Executive Assistant

Staff Member



\$ 15



Park step:
You may take up to four actions in total.

"Interruptions down, efficiency up. You got it."



"I would have gotten away with it too, if it weren't for those meddling kids!"



Souvenir Seller

Staff Member



\$10



Once per Guests step:
Gain 5 extra coins for each open sideshow
in your park.



Batwing Element

Upgrade - Feature



Only on thrill rides \$15



Batwing Element

Upgrade - Feature



Only on thrill rides \$15



Comfortable Seating

Upgrade - Feature



\$7



If you can't win a prize at the sideshow,
there's always cash.



Comfortable Seating

Upgrade - Feature



\$7



Air Conditioning

Upgrade - Guest Services



Not on rides \$5



Air Conditioning

Upgrade - Guest Services



Not on rides \$5



Lockers & Coat Check

Upgrade - Guest Services



\$4



Deluxe Quality 2

Upgrade - Quality

NT-n-PLAY ~ PRINT-n-PLAY ~ PRINT-n-PLAY ~ PRINT-n-IT-n-f

DELUXE
Quality

Three stars on a red ribbon.

\$ 19

Attractions can have more than one *Deluxe Quality* upgrade.

Deluxe Quality 2

Upgrade - Quality

NT-n-PLAY ~ PRINT-n-PLAY ~ PRINT-n-PLAY ~ PRINT-n-IT-n-f

DELUXE
Quality

Three stars on a red ribbon.

\$ 19

Attractions can have more than one *Deluxe Quality* upgrade.

Premium Quality 4

Upgrade - Quality

NT-n-PLAY ~ PRINT-n-PLAY ~ PRINT-n-PLAY ~ PRINT-n-IT-n-f

PREMIUM
Quality

Four stars on a blue ribbon.

\$ 25

Attractions can have more than one *Premium Quality* upgrade.

Superior Quality 1

Upgrade - Quality

NT-n-PLAY ~ PRINT-n-PLAY ~ PRINT-n-PLAY ~ PRINT-n-IT-n-f

SUPERIOR
Quality

One star on a black ribbon.

\$ 15

Attractions can have more than one *Superior Quality* upgrade.

Superior Quality 1

Upgrade - Quality

NT-n-PLAY ~ PRINT-n-PLAY ~ PRINT-n-PLAY ~ PRINT-n-IT-n-f

SUPERIOR
Quality

One star on a black ribbon.

\$ 15

Attractions can have more than one *Superior Quality* upgrade.

Vampire Theme 2

Upgrade - Theme

NT-n-PLAY ~ PRINT-n-PLAY ~ PRINT-n-PLAY ~ PRINT-n-IT-n-f

Illustration of an open red coffin in a dark, gothic setting.

\$ 16

Vampire Theme 2

Upgrade - Theme

NT-n-PLAY ~ PRINT-n-PLAY ~ PRINT-n-PLAY ~ PRINT-n-IT-n-f

Illustration of an open red coffin in a dark, gothic setting.

\$ 16

Vampire Theme 2

Upgrade - Theme

NT-n-PLAY ~ PRINT-n-PLAY ~ PRINT-n-PLAY ~ PRINT-n-IT-n-f

Illustration of an open red coffin in a dark, gothic setting.

\$ 16

ROUND SUMMARY

1 EVENTS STEP

- » Players draw an Event card each.
- » Play the top card of the City deck.
- » Players take turns playing one event at a time.
- » Continue until all players pass in a row.

2 PARK STEP

- » Players take turns taking one action at a time.
- » Players get three actions. Each can be any one of:

TAKE • Put a card from the Market into your hand.

- Draw two Park cards, or two Event cards, or two Blueprint cards. Keep one or none.
- Discard a card to draw 5 Park cards. Keep one.

BUILD • Pay to build a Park card from your hand or directly from the Market.

DEMOLISH • Demolish/dismiss a card in your park.

LOOSE CHANGE • Gain 1 coin for each attraction.

3 GUESTS STEP

- » **STARS:** total stars in your park, limited by your guest capacity, to work out how many guests.
- » **TICKETS:** check for extra income from events or abilities marked with a ticket symbol.
- » **MONEY:** 1 coin per guest, any extra from tickets.

4 CLEANUP STEP

- » Discard any pinned Event cards.
- » Turn up any face-down Park cards in your park.
- » Clear and refill the Market.
- » Discard down to 5 cards in hand.
- » Advance the Starting Player marker.

